



BLUE EARTH COUNTY

BOARD OF COMMISSIONERS
BOARD WORK SESSION AGENDA

OCTOBER 2, 2012

9:00 AM

- 9:00 A.M. Landfill Update (1)
Mr. Scott Fichtner, Environmental Services Director
- 9:50 A.M. Break
- 10:00 A.M. Communications Update
Ms. Jessica Beyer, Communications Manager and Business Analyst
- County Website Presentation
 - Video Taping Board Meetings Discussion
- 10:30 A.M. Administrative Services
Mr. Robert Meyer, County Administrator
- ATV Permit Fee (2)
 - 2013 Draft Board Calendar (3)
 - Board Chair Rotation Schedule (4)
 - Board Committee Assignments (5)
 - Gopher Bounties (6)
 - Per Diem Rates (7)
- 11:00 A.M. Depart to Rapidan
- 11:30 A.M. Tour of the Rapidan Dam, Rapidan
- 12:00 P.M. The Dam Store, Rapidan
Public Invited to Attend

** Next proposed work session date: November 27th



INTEROFFICE MEMO

To: County Board of Commissioners
From: Robert Meyer, County Administrator
Date: September 26, 2012
Re: Landfill Update

The attached information is several sections from the Solid Waste Permit documentation that have been sent to the MPCA for review for the expansion of the Ponderosa Landfill.

Attached is:

- Application Cover Letter
- Executive Summary
- Landfill Background Information
- Landfill Gas Management Information
- Map of the Proposed Expansion Area

The permit application in its entirety and the environmental assessment worksheet are available at the Environmental Services Department.

Scott Fichtner, Environmental Services Director, and Dave Kronlokken, Solid Waste Supervisor, will be present at the work session to discuss the documents and provide an update on the Ponderosa Landfill.



Eagle Point II • 8550 Hudson Blvd. North, Suite 105
Lake Elmo, MN 55042
(651) 288-8550 • Fax: (651) 288-8551
www.foth.com

July 30, 2012

Ms. Sherri Nachtigal
Minnesota Pollution Control Agency
Southeast Regional Office
18 Wood Drive Southeast
Rochester, Minnesota 55987

Dear Ms. Nachtigal:

RE: Ponderosa Sanitary Landfill, SW-87
Permit Expansion

On behalf of Blue Earth County (County), Foth Infrastructure & Environment, LLC (Foth) is pleased to submit to the Minnesota Pollution Control Agency (MPCA) two (2) copies of the document entitled "Ponderosa Sanitary Landfill, SW-87 Permit Expansion." This report updates the MPCA Permit dated July 25, 2008, and the Permit Renewal Report dated November 2007. The associated set of large drawings is provided under separate cover.

The following summarizes portions of the permit that are being changed, or updated:

- ♦ Expansion of the existing permitted waste limits to include additional horizontal airspace in one new Phase, Phase 6. Future vertical airspace is shown for Phases 4, 5, and 7.
- ♦ Updated Closure Plan and Final Cover Design.
- ♦ Updated Financial Assurance Costs.
- ♦ Updated leachate management information including leachate recirculation in lined portions of the landfill.
- ♦ Updated Surface Water Management Plan.
- ♦ 10,000 cubic yards stockpile for concrete. (Shown on Drawing 2)

Submitted as separate stand-alone reports, along with this document are updated versions of the:

- ♦ Contingency Action Plan
- ♦ Operations and Maintenance Manual
- ♦ ESAP
- ♦ Industrial Solid Waste Management Plan (Approved 2011)
- ♦ LFG Management Plan
- ♦ Leachate Management Plan

If you have any questions during your review of this submittal or require additional information, please contact Curt Hartog at (651) 288-8595.

Sincerely,

Foth Infrastructure & Environment, LLC

Curtis L. Hartog, P.E.
Technology Director

Brian M. Sperrazza, P.E., P.G.
Project Environmental Engineer



Ponderosa Sanitary Landfill, SW-87

Permit Expansion

Executive Summary

This Permit Expansion document has been developed by Foth Infrastructure & Environment, LLC (Foth) on behalf of Blue Earth County (County) Environmental Services Department, Ponderosa Sanitary Landfill, SW-87 (Landfill). This submittal, along with other referenced documents, is intended to provide a complete permit renewal with major modifications for the construction and operation of the Blue Earth County Ponderosa Sanitary Landfill.

The major modifications include the addition of airspace in Phases 4, 5, 6 & 7, and leachate recirculation in the lined portion of the landfill. For this permit application, Blue Earth County is requesting permitting for Phase 6 and also for leachate recirculation in the lined areas. The Phase 6 expansion area is located north of Phase 3 - Cell 8. This Phase would be developed next and this permit modification includes a detailed design of the development of this Phase. Phases 4, 5 & 7 are future phases that would be permitted at a later time; however, some design plans pertaining to these Phases are shown in this permit application for informational purposes. Phases 4 & 5 are located in the saddle area between existing Phases 1-3 and the closed landfill. Phase 7 is located in the saddle area between the proposed Phase 6 expansion and the closed landfill.

The purpose of all of these expansions is to provide additional dedicated disposal area for mixed municipal solid waste (MSW). The new cells in Phase 6 exist outside of the current permit boundary of the landfill and are located in an area that would be considered an expansion of the waste placement area from what is currently permitted. Future Phases 4, 5 & 7 exist within the current permit boundary. The expansions require approval of additional permitted airspace and Certificate of Need (CON). The expansion allows the Ponderosa Landfill to continue serving its role in the County's integrated waste management system.

2 Background Information

The Landfill began operating in 1973 following receipt of MPCA permit SW-87 issued on August 14, 1972. The original permitted fill area, including the Xcel Energy disposal area, encompasses 66.9 acres within the 416-acre site identified in permit SW-87. The Landfill has been operated continuously since 1973 and has received mixed municipal solid waste, demolition waste, and a limited amount of industrial waste as authorized by past MPCA co-disposal procedures. The 1972 permit specifically indicated that toxic and hazardous substances were not to be disposed at this Landfill.

Following receipt of MPCA authorization in 1976, a clay-lined trench was constructed for the disposal of industrial waste (principally diatomaceous earth) from the Honeymead Products Company in Mankato. An amended permit was issued by the MPCA for the continued operation of the Landfill on November 20, 1984.

In 1986, the previous owner executed an option to sell approximately 42 acres of the property located to the southwest of the existing waste deposit to Northern States Power Company (NSP) (now doing business as Xcel Energy) for the purpose of developing an ash disposal facility. The location of the NSP landfill is depicted on Drawing No. 2. An ash disposal facility temporary permit was issued by the MPCA. Temporary cells were constructed in 1987. The County issued a license in 1991 for a permanent facility. The MPCA also issued a permit in 1991. NSP began operations in 1992 under the final, 1991 permit.

The old unlined landfill was closed in 1994 and hereafter is referred to as the Closed Area. A final cover with a 24-inch clay barrier layer and a passive gas venting system (8 vents) was constructed on the Closed Area in 1995. An active gas collection and control system was constructed on the Closed Area in 2003. The system consisted of three wells (boreholes) connected by a blower/flare system. These wells were constructed in 3-foot diameter boreholes that extended into the vadose zone. A clustered well design was installed, with two wells in each borehole. The landfill gas system in the Closed Area was modified in 2010 by connecting the three active gas wells (installed in 2003) and five passive gas vents (installed in 1995) to a landfill gas extraction system header pipe.

The active LFG collection system was also extended into the lined areas (Phases 0-3) at the Landfill in 2010. Two vertical (GW-4 and GW-5) and two horizontal (HGW-3 and HGW-4) LFG collection wells were installed in 2010. Additionally, the LFG collection system was connected to the leachate line cleanout in Cell 0 (HGW-1) and Cell 1 (HGW-2). Cells 0 and 1 contain RRT residuals and have the potential to produce some LFG. In 2010, the flare and controls were also upgraded, additional condensate management systems were installed and a new drip leg was constructed.

An expansion for Phases 1 through 5 located south of the old unlined landfill was approved by the MPCA in the 1994 Permit Reissuance. The permitted airspace for Phases 4 & 5 was transferred to the Phase 3 expansion (Cells 8-10) in the 2008 Permit Reissuance. For operational purposes, some phases have more than one cell. Cell numbering of Phases 0, 1, 2 and 3 is illustrated in Drawing No. 3. Phase 1 – Cells 1 and 2 were constructed in 1994. In 1995, Phase 2 – Cells 3 and 4 were constructed, and in 2001 part of Phase 3 (Cell 5) was constructed. Currently, waste residuals from RRT are deposited in Phase 0 – Cell 0, which was constructed on 2004. Phase 3 – Cell 6 was constructed in 2004. Phase 3 – Cell 7 was constructed in 2006. Phase 3 – Cells 8 & 9 were constructed in 2008. Phase 3 – Cell 10 was constructed in 2010. Currently, mixed MSW is deposited in Phase 3 – Cells 8-10.

The Landfill is owned by the County and under the direction of the Environmental Services Department. The County purchased the Landfill in October 1996 and it is now operated under contract by Ponderosa Management Company, LLC

6 Landfill Gas Management

6.1 Analysis for Beneficial Use

In 2009, Foth completed a feasibility study for BEC on potential LFG to energy options for the Ponderosa landfill. The report (Landfill Gas to Energy Feasibility Study, May 2009) concluded the most favorable use for LFG generated at the Ponderosa landfill would be conversion to electricity through specific engine, generator sets. However, in order to approach economic feasibility thresholds, leachate recirculation would need to be implemented to ensure enough LFG for a long enough time to make the project viable. To ensure viability and feasibility for the project, the report recommended confirmation of LFG quality and quantity, permitting of leachate recirculation at the Ponderosa landfill by the MPCA and a favorable power purchase agreement. This permit application is the first step in Blue Earth County's goal of beneficial reuse of the collected LFG by requesting leachate recirculation be permitted at the Ponderosa landfill.

6.2 Gas System

A passive gas venting system was installed in the Closed Area during construction of the final cover in 1995. A combination of horizontal and vertical collectors was installed. In addition, automatic solar powered torches were installed on several of the passive well heads. Also some well heads were retrofitted in 2001 with fanned roof vents. The roof vents were installed to aid in increasing differential pressure, thus providing more efficient gas venting.

In the summer of 2003, three active landfill gas wells were installed in the Closed Area (see Drawing No. 13). These wells were constructed in 3-foot diameter boreholes that extended into the vadose zone. A clustered well design was installed, with two wells in each borehole. The vadose zone was isolated from the waste by a bentonite seal. The clustered design allows a separate vacuum to be placed on the waste and the underlying soils in the vadose zone. The wells were connected, via well heads with valves and a main header to a blower/flare package. With the installation of the active system, it became apparent the passive vents were drawing air into the landfill. Thus, the passive vents were capped. In 2006, the system was enhanced with a compost biofilter. The compost biofilter was installed to treat the LFG prior to release to the atmosphere. Since the LFG did not contain sufficient methane to support combustion, a compost biofilter was determined to be the most effective method to treat the LFG.

The landfill gas system in the Closed Area was modified in 2010 by connecting the three active gas wells (installed in 2003) and five passive gas vents (installed in 1995) to a landfill gas extraction system header pipe. The header pipe also connects two vertical gas collection wells and four horizontal gas wells in the active area of the landfill, which collectively make-up the gas collection and control system at the Landfill. This enhancement of the LFG collection system was coupled with an upgrade to the flare, controls and condensate management system.

The LFG Management Plan contains additional details on the LFG system and operation.

Upgrades to the flare included reconnection of the automatic features, like auto-restart, that were disabled when the compost biofilter was used; addition of a digital data recorder to monitor and record flare flow and flare temperature; and the addition of an autodialer to notify key staff when the flare malfunctions or shuts down.

The condensate collection and management system was also upgraded in 2010. Condensate from most of the LFG collected from closed landfill is sent to a manhole located between the closed and active portions of the Ponderosa Landfill. This manhole also has controls and solar powered alarms to notify onsite personnel when condensate pumping needs to be conducted. If the alarms are active, a generator is used to connect to the control panel and power the dedicated pump. Condensate is discharged to the Cell 4 clean out and eventually is pumped to the leachate storage ponds.

The remaining LFG wells are connected to a drip leg by the flare. Condensate is collected at the drip leg and routed to a 1000 gallon double wall coated steel tank. This tank contains a pump that automatically discharges condensate to the leachate ponds. The condensate tank was part of the original 2003 landfill gas system and was relocated to its current location in 2010. All condensate that is collected from the active LFG collection system is pumped to the existing leachate treatment ponds.

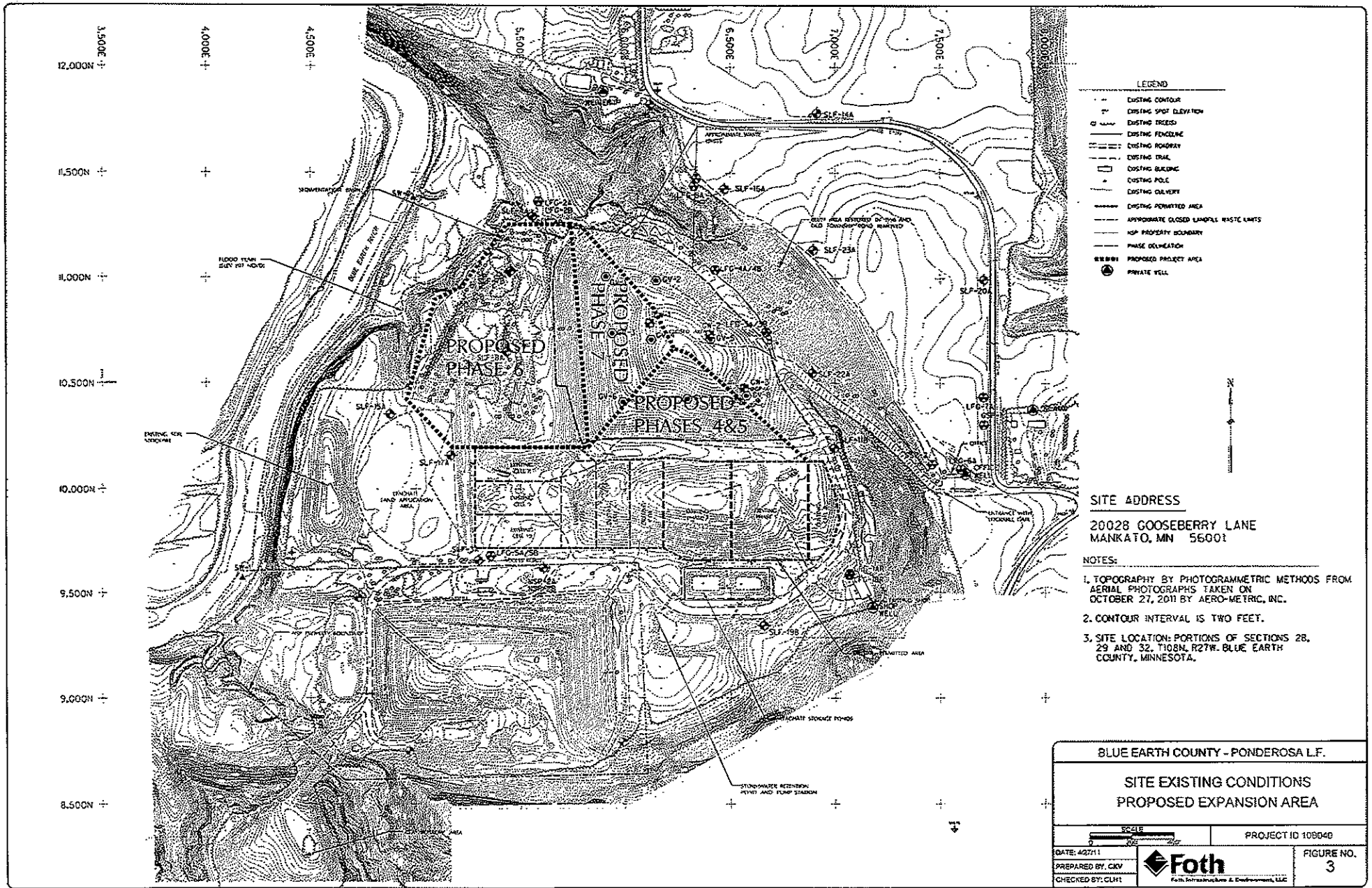
6.3 Gas Monitoring

In the landfill setting, there is often concern that LFG can migrate laterally away from the waste fill. Systematic monitoring, combined with other abatement measures, can minimize potential risks to humans.

The potential for hazardous accumulations of LFG is greatest in structures close to the waste fill. The greatest concern is that methane concentrations could reach levels which are potentially explosive. The degree of potential hazard depends upon soil conditions, the type and use of buildings, and proximity to the waste fill.

At the Landfill, the only building located near the waste disposal area is the equipment maintenance shop (shop building). Gas monitoring is provided by 13 gas probes. In addition, a continuous methane detection meter is installed in the shop building.

Gas monitoring is conducted monthly on the gas probes and reported annually to the MPCA. Gas well field monitoring is conducted approximately twice per month to adjust well field settings to ensure collection of LFG but not to overdraw the LFG well field. Additionally, Blue Earth County downloads information from the flare data recorder every month. Data is analyzed for any trends and to trouble shoot potential problems. Data from the data recorder is summarized annually and reported to the EPA as part of the mandatory reporting of GHG data





INTEROFFICE MEMO

To: County Board of Commissioners
From: Robert W. Meyer, County Administrator
Date: September 27, 2012
Re: ATV Ordinance Permit Discussion

As a result of the September 25 Board meeting, where a public hearing was held in regards to ATV ordinance permit requirements, the County Board will need to set permit conditions.

Discussion points for the conversation include:

- County Department Area Administering Permits
- Fee Schedule Options
- Permit Conditions

Attached are examples of current County ATV-related fees to assist in the discussion.

All-Terrain Vehicle (ATV) License & Registration

- Fee for private / agriculture ATV license is \$6 plus \$8.50 Issuing fee.
- License is valid for three years.
- Owner must provide make, model, year, serial number, and engine size (HP or cubic centimeters) and their driver's license and signature.

<u>Type of Transaction</u>	<u>Fee</u>	<u>Issuing Fee</u>	<u>Duration</u>
New (unregistered)	\$45.00	\$8.50	3 calendar years
Renewal only	\$45.00	\$6.00	3 calendar years
New collector ATV	\$6.00	\$8.50	Non-expiring
Duplicate collector ATV	\$4.00	\$6.00	

BLUE EARTH COUNTY COMMISSIONERS 2013 BOARD CALENDAR

January

1 Holiday
 8 Board Meeting
 21 Holiday
 22 Board Meeting
 23-24 Newly Elected Training, AMC

February

5 Board Meeting
 18 Holiday
 26 Board Meeting

March

2-6 NACo Legislative Conference
 12 Board Meeting
 20-21 AMC Legislative Conference
 26 Board Meeting

April

9 Board Meeting
 23 Board Meeting

May

14 Board Meeting
 22-24 NACo WIR Conference
 27 Holiday
 28 Board Meeting

June

11 Board Meeting
 25 Board Meeting

July

4 Holiday
 9 Board Meeting
 19-22 NACo Annual Conference
 30 Board Meeting

August

13 Board Meeting
 27 Board Meeting

September

2 Holiday
 10 Board Meeting
 24 Board Meeting

October

8 Board Meeting
 22 Board Meeting

November

5 Board Meeting
 11 Holiday
 19 Board Meeting
 28-29 Holiday

December

3 Board Meeting
 9-10 AMC Annual Conference
 17 Board Meeting
 24-25 Holiday

2013																																																														
January					February					March					April					May					June																																					
S	M	T	W	T	F	S	S	M	T	W	T	F	S	S	M	T	W	T	F	S	S	M	T	W	T	F	S	S	M	T	W	T	F	S	S	M	T	W	T	F	S																					
	1	2	3	4	5						1	2																																																		
6	7	8	9	10	11	12	3	4	5	6	7	8	9	3	4	5	6	7	8	9	13	14	15	16	17	18	19	10	11	12	13	14	15	16	17	18	19	20	21	22	23	24	25	26	27	28	29	30														
13	14	15	16	17	18	19	10	11	12	13	14	15	16	10	11	12	13	14	15	16	20	21	22	23	24	25	26	17	18	19	20	21	22	23	17	18	19	20	21	22	23	24	25	26	27	28	29	30														
20	21	22	23	24	25	26	17	18	19	20	21	22	23	17	18	19	20	21	22	23	27	28	29	30	31			24	25	26	27	28	29	30	24	25	26	27	28	29	30	31																				
27	28	29	30	31			24	25	26	27	28			24	25	26	27	28	29	30								26	27	28	29	30	31		26	27	28	29	30	31		23	24	25	26	27	28	29														
July					August					September					October					November					December																																					
S	M	T	W	T	F	S	S	M	T	W	T	F	S	S	M	T	W	T	F	S	S	M	T	W	T	F	S	S	M	T	W	T	F	S	S	M	T	W	T	F	S	S	M	T	W	T	F	S														
	1	2	3	4	5	6				1	2	3	1	2	3	4	5	6	7																																											
7	8	9	10	11	12	13	4	5	6	7	8	9	10	8	9	10	11	12	13	14	6	7	8	9	10	11	12	14	15	16	17	18	19	20	15	16	17	18	19	20	21	22	23	24	25	26	27	28	22	23	24	25	26	27	28	29	30					
14	15	16	17	18	19	20	11	12	13	14	15	16	17	15	16	17	18	19	20	21	21	22	23	24	25	26	27	18	19	20	21	22	23	24	18	19	20	21	22	23	24	22	23	24	25	26	27	28	29	30												
21	22	23	24	25	26	27	18	19	20	21	22	23	24	22	23	24	25	26	27	28	28	29	30	31				25	26	27	28	29	30	31	25	26	27	28	29	30	31	29	30	31																		
28	29	30					25	26	27	28	29	30	31	29	30																																															

HTTP://WWW.PRINTFREE.COM

Blue Earth County County Board Chair Rotation

2013	Drew Campbell, Chair Will Purvis, Vice-Chair Vance Stuehrenberg Kip Bruender Mark Piepho
2012	Mark Piepho, Chair Drew Campbell, Vice Chair Will Purvis Vance Stuehrenberg Kip Bruender
2011	Kip Bruender, Chair Mark Piepho, Vice Chair Drew Campbell Will Purvis Vance Stuehrenberg
2010	Will Purvis, Chair Kip Bruender, Vice Chair Mark Piepho Drew Campbell Tom McLaughlin



COMMISSIONERS COMMITTEE ASSINGMENTS

Airport Commission	Stuehrenberg
AMC District 7	All Commissioners
AMC Environmental and Natural Resources Policy Committee	Campbell
AMC General Government Policy Committee	Piepho
AMC Health and Human Services Policy Committee	Stuehrenberg
AMC Public Safety Committee	Purvis
AMC Strategic Communications and Outreach	Purvis
AMC Voting Members	All Commissioners/ Bob Meyer/O'Connor/Milow
Brown County Evaluation Center JPB	Purvis
Canvassing Board	Campbell/Stuehrenberg
City of Mankato Charter Commissioner	Stuehrenberg
City/County Intergovernmental Committee	Bruender/Stuehrenberg
Community Corrections Advisory Board	Stuehrenberg/Piepho (alternate)
Community Services Council	Campbell/Piepho (alternate)
Department Heads	All Commissioners
Ditch Advisory Committee	Bruender/Purvis/Bob Meyer/Craig Austinson
Ditch Inspectors	Bruender/Purvis
Environmental Services Advisory Committee	Bruender
Envision 2020	Bob Meyer/Campbell
Envision 2020 Environmental Quality Board Focus Group	Campbell
Envision 2020 Passenger Rail Group	Stuehrenberg
Extension Committee	Bruender/Purvis
Greater Blue Earth River Basin Policy Committee (GBERBA)	Campbell
Greater Mankato Diversity Council	Stuehrenberg
Greater Mankato Growth Regional Advisory Committee	Bruender/Bob Meyer
Highway 14 Partnership	Campbell/Stuehrenberg (alternate)
Highway 169 Corridor Coalition	Stuehrenberg
Highway 169 Corridor Policy Committee	Stuehrenberg/Piepho
Inter-Governmental Ice Arena Committee	Stuehrenberg
Intergovernmental Youth Asset Committee	Campbell
Judicial Coordinating Council/BluePrint for Safety	Campbell
Labor Negotiations	Bruender/Piepho
Law Library Board	Purvis
Library Board/TDS	Purvis

MATAPS Policy Committee	Stuehrenberg
Mayors and Clerks	All Commissioners
Minnesota Inter-County Association (MICA)	Bruender/Piepho
Minnesota Counties Intergovernmental Trust (MCIT) Voting Delegate	Bruender/Meyer (alternate)
Minnesota County Futures Project Task Force (AMC)	Bruender
Minnesota Drainage Inspector Association	Bruender/Purvis
Minnesota River Board	Campbell/Piepho (alternate)
Minnesota Transportation Alliance	Stuehrenberg
MRCI Board	Bruender
MVAC Board	Bruender
NACo Ag and Rural Affairs Committee	Bruender
NACo Justice and Public Safety Steering Committee	Purvis
NACo Methamphetamine Action Group Task Force	Purvis
NACo Transportation Steering Committee	Stuehrenberg
National Guard Community Committee	Stuehrenberg
Partners for Affordable Housing Task Force	Piepho
Planning and Zoning Board	Bruender/Stuehrenberg (alternate)
RC & D	Piepho
Recycling Education Committee	Piepho
Redistricting Committee	Bruender/Piepho
Region 9 Development Commission Board	Campbell
Region 9 Transportation (TAC)	Campbell/Al Forsberg
Regional Radio JPB	Bruender/Tim Mohr (alternate)
Riverbend Center for Enterprise Facilitation (RCEF)	Bruender/Piepho
Rural Minnesota Energy Board	Purvis/Piepho (alternate)
South Center Community Based Initiative	Phil Claussen/Bob Meyer (alternate)
South Central EMS JPB	Bruender/Purvis (alternate)
South Central Immunization Registry	Bob Meyer/Phil Claussen (alternate)
South Central Towards Zero Death Committee	Campbell
South Central Workforce Council JPB	Bruender
Southeast Minnesota Homeland Security Emergency Management – Region One JPB	Mike Maurer/Brenda Olmscheid (alternate)
Southeast Minnesota Recyclers' Exchange (SEMREX)	Piepho
Southern Minnesota Tourism Association	Dean Ehlers/Campbell (alternate)
State Community Health Services Advisory Committee	Piepho/Phil Claussen (alternate)
State of MN Sentence to Serve JPA	Josh Milow/Bob Meyer (alternate)
SWCD	Bruender/Purvis
Township Officials (BECATO)	All Commissioners



INTEROFFICE MEMO

To: County Board of Commissioners
From: Robert Meyer, County Administrator
Date: September 27, 2012
Re: Gopher Bounties

Minnesota State Statute 348.12 requires that County Boards adopt a resolution annually to offer a bounty for the destruction of gophers.

348.12 BOUNTIES, CERTAIN ANIMALS.

Any county board or board of town supervisors may, by resolution, offer a bounty for the destruction of gophers or ground squirrels. The resolution may be made to cover the whole or any part of the county, and may be annually renewed, but it shall have force and effect only during the calendar year in which it was adopted or renewed. The bounty shall be in such amount or amounts and apply during such months, as may be designated by the county board or board of town supervisors by resolution.

Townships pay the citizens and in turn, submit a payment request to the County for reimbursement.

Blue Earth County set reimbursements of \$0.50 per striped gopher and \$1.00 per pocket gopher in 2012.



INTEROFFICE MEMO

To: County Board of Commissioners
From: Robert Meyer, County Administrator
Date: September 27, 2012
Re: Per Diem Rates

Blue Earth County Employee Reimbursement Policy states:

Per Diems: Each year the County Board establishes the per diem rate and the various Boards and Commissions eligible for per diems.

Current per diems are set at \$75 per day, calculated as follows:

- \$50 per half day, where the start of the first meeting until the completion of the last meeting is 4 ½ or less consecutive hours elapsed time, regardless of the number of meetings.
- \$75 per full day maximum where the start of the first meeting until the completion of the last meeting is 4 ½ or more consecutive hours elapsed time, regardless of the number of meetings.