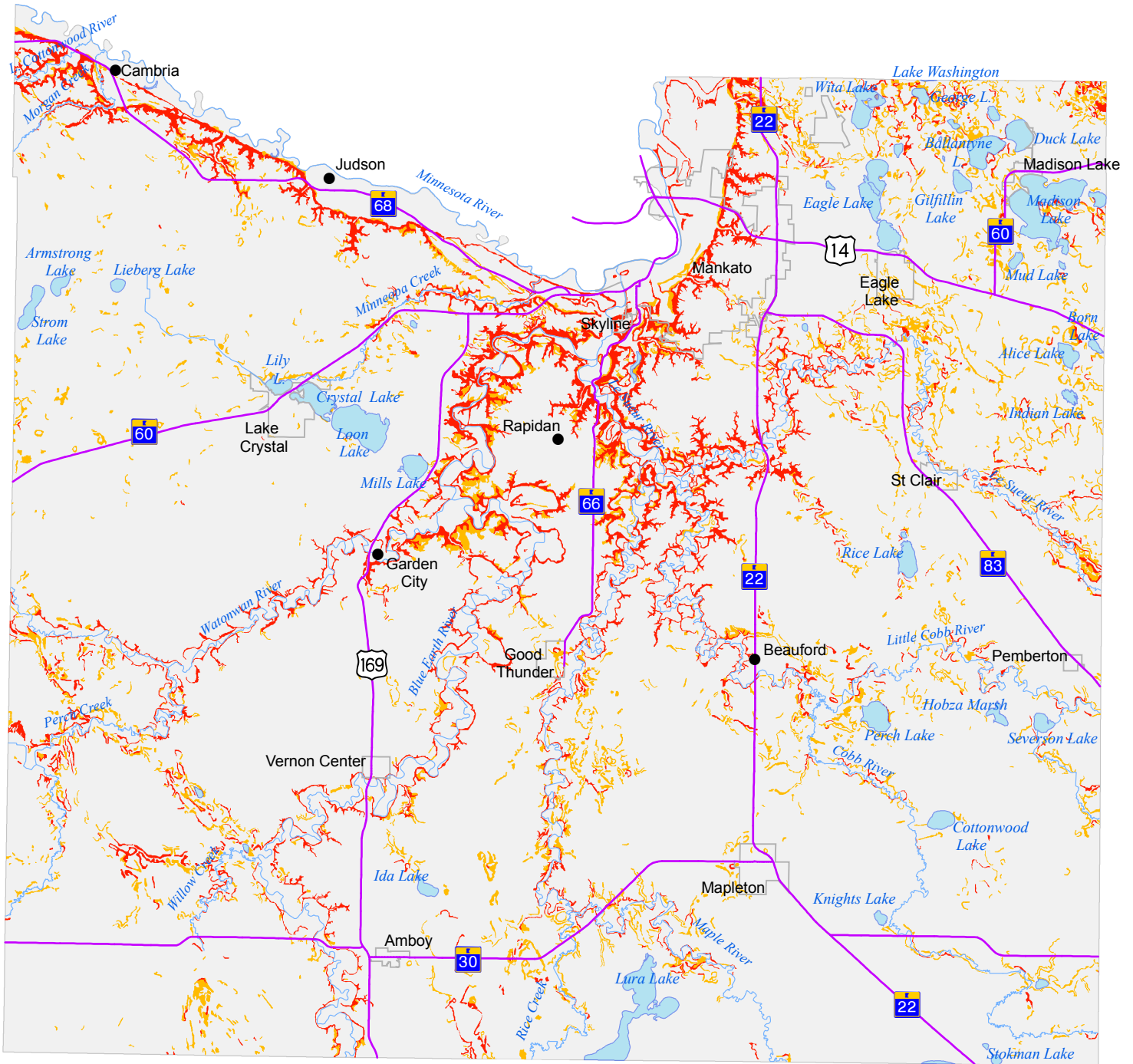
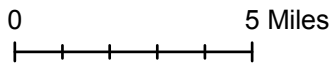


# Erodible Land Classification - Blue Earth County



- Highly Erodible Land
- Potentially Highly Erodible Land
- Not Highly Erodible Land

- Stream
- Lake



Prepared By: Blue Earth County  
Environmental Services  
September 2004

Sources: Blue Earth County Soil Survey  
University of Minnesota's  
Soil Survey Information System